
Applicaton Guide: Stratocell® Whisper® Plenum Barriers

Stratocell Whisper panels are a honeycomb-like matrix of networked closed cells that efficiently absorb noise. A closed structure provides effective transmission loss as a noise barrier, ensuring this solution is fast, light and easy to fit inside a ceiling cavity.

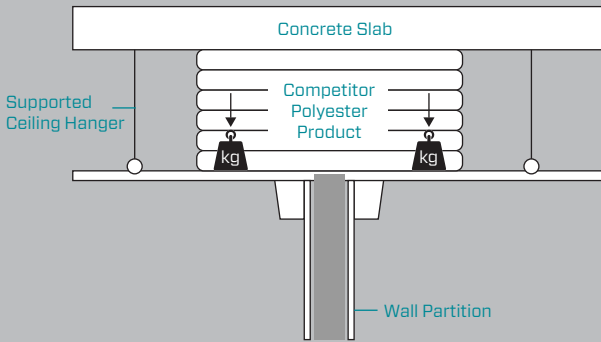
Key features:

- Eliminates labour intensive layer stacking
- No transfer of mass to the ceiling tile
- Lightweight - reduction of installed mass up to 62% vs layer stacking
- SAFE:
 - ✓ Minimal PPE
 - ✓ Non-irritant
 - ✓ Low dust*
- Flexible & Moisture resistant.
- Install to 2.4M with corkscrews and tape joins.
- Low mess, low fuss.

** VOC emissions class A+. Non carcinogenic, non-irritant at room temperature.*

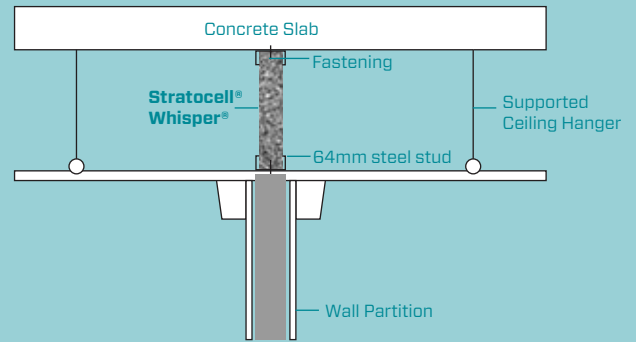
Turn stacked horizontal barriers vertical with **Stratocell® Whisper®**

Old Method

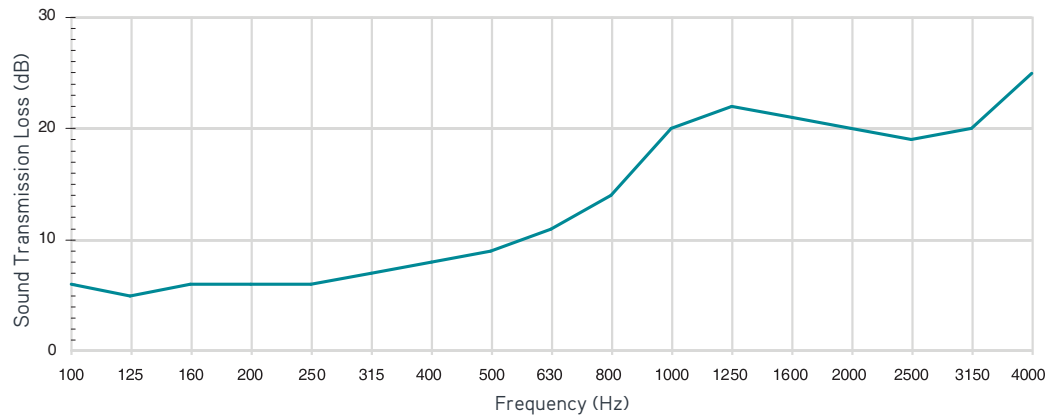


Use less and achieve more with **Stratocell® Whisper®**

New Method



Stratocell® Whisper®
50mm Sound
Transmission Loss



Frequency (Hz)	100	125	160	200	250	315	400	500	630	800	1000	1250	1600	2000	2500	3150	4000	5000	STC
Stratocell® Whisper® 50mm	6	5	6	6	6	7	8	9	11	14	20	22	21	20	19	20	25	30	15

Specifications:

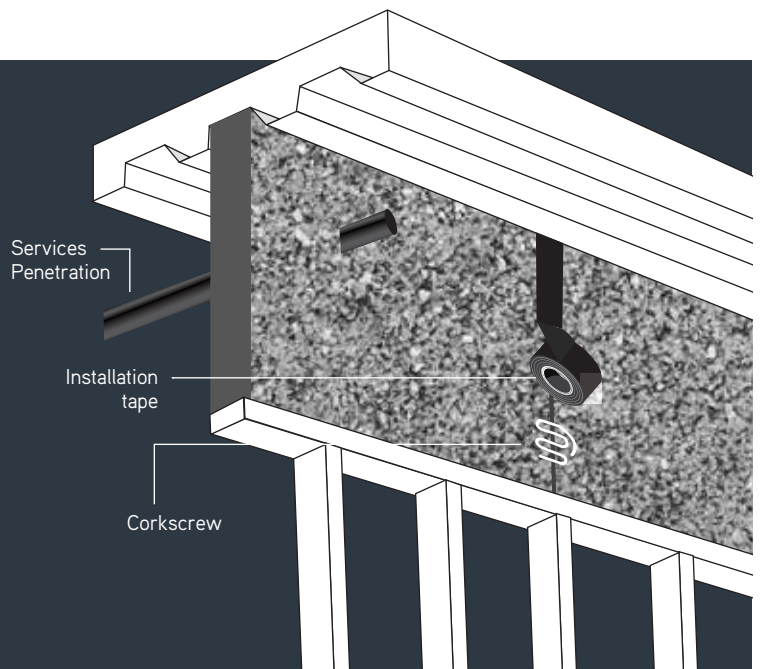
- Group 1-S ISO 9705: 1993
- Thickness: 50mm
- Sheet size: Nominal 1200mm x 2400mm
- Weight: 1250 GSM
- Density: 25kg/m³
- Temperature range: -60°C to +80°C

Installations:

Slot Whisper into 64mm steel stud top and bottom.

How to join sheets:

Stitch sheet joins together using Whisper flush Mount corkscrews, and seam seal with installation tape.



Whisper should not be used near heat sources exceeding this temperature range. Where the ceiling plenum is used as an active return by the HVAC system, ensure airflow is not reduced by consulting a Mechanical Services Engineer.

For more information contact:

Keith Proctor
Sales Consultant
+64275380604
keith.proctor@sealedair.com