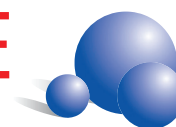


CLIMATELINE
Finished Plasterboard



Technical Manual

PRE-FINISHED INTERIOR
LINING SYSTEM

Manufactured by:

climate[™]
THE CLEAN FINISH

Published September 2019. Visit www.climatesurfaces.com for latest edition.

Contents

THE CLIMATELINE® SYSTEM.....	3
INTENDED USES.....	3
LIMITATIONS.....	4
COMPLIANCE.....	5
WARRANTY.....	5
PRODUCT RANGE.....	6
PHYSICAL PROPERTIES.....	7
CARE AND MAINTENANCE.....	8
HANDLING.....	8
INSTALLATION.....	9
REPAIR.....	14
HEALTH AND SAFETY.....	14
TECHNICAL SUPPORT.....	14



MANUFACTURED BY

Climate Coating Ltd

New Zealand 0800 256 111

Australia +64 9 256 7879

Email info@climatesurfaces.com

www.climatesurfaces.com

THE CLIMATELINE® SYSTEM

ClimateLine® is a complete pre-finished interior wall and ceiling lining system suitable for new builds and ideal for retrofit applications in existing dwellings.

ClimateLine® is especially beneficial when utilised in pre-fab and modular construction, enabling a faster build time and a high quality finish.

The ClimateLine® system consists of a range of pre-finished plasterboard panels and a range of attractive, discreet colour matching trim. No further finishing is required once the panels and trim are installed.

Manufactured from quality square edge standard and water resistant plasterboard that's made in New Zealand and powder coated with Climate Décor Shield, creating a durable, moisture resistant, attractive and sustainably produced lining.

INTENDED USES

- Non-structural interior wall and ceiling linings
- Pre-fab and modular construction – dry and wet areas
 - Work force accommodation and service buildings
 - Education
 - Medical
 - Student accommodation
 - Bathroom pods
 - Residential
- Commercial kitchens, bathrooms, laundries and service areas
- Residential bathrooms, laundries and kitchens
- Garages
- Non-load bearing commercial partitions

When to consider using ClimateLine®:

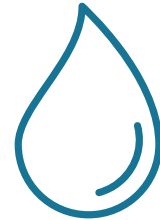
- **Speed** – increase throughput and minimise delays in prefab construction
- **Less mess** - when a painted plasterboard may cause time delays or disruption to building occupants.
- **Durability** - when a more durable, washable and moisture resistant wall surface is required vs acrylic paints
- **Fire resistance** - when a pre-finished lining material is desired and a Group 1 fire rating is necessary

LIMITATIONS

Moisture

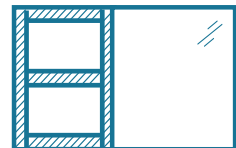
ClimateLine® is not intended for exterior use or in high humidity areas where exposure to humidity above 90% RH is expected. Such areas include group shower or steam rooms and chlorine rich environments, such as indoor heated swimming pools.

ClimateLine® is not intended for use within shower enclosures but is suitable for use in wet areas such as bathrooms, laundries and kitchens where a moisture resistant surface is required.



Load Bearing Walls

The Climateline® system, installed in accordance with the installation instructions herein, cannot be used as structural bracing. However, ClimateLine® can be installed as an overlay to an approved bracing system provided it does not interfere with the performance specifications of the approved bracing system.



Passive Fire Resistance

The Climateline® system, installed in accordance with the installation instructions herein, cannot be used as an approved fire rated wall system. However, ClimateLine® can be installed as an overlay to an approved system provided it does not interfere with the performance specifications of the approved system.



Temperature

ClimateLine® must not be exposed to temperatures higher than 52°C for prolonged periods.



COMPLIANCE

New Zealand Building Code (NZBC)

Clause B2 Durability

The ClimateLine® System meets the durability requirements for interior linings of 5 years in accordance with B2 3.1 (c) and 15 years for wet area linings.

Clause C Fire

ClimateLine® Panels have been tested in accordance with AS/NZS 3837, Heat Release and Smoke Production by an accredited independent testing authority, for the purpose of establishing Group Classification in accordance with the NZBC Verification Method C/VM2 Appendix A.

Group 1-S.

Building Code of Australia (BCA)

Durability

The ClimateLine® System meets the durability requirements for interior linings of 10 years in accordance with the BCA.

Fire Properties

ClimateLine® panels have also been tested in accordance with the AS/NZS 3837 to determine group classification in accordance with the Building code of Australia.

BCA Clause C1.10A Group 1.

Plasterboard

The plasterboard manufactured by Winstone Wall Boards complies with AS/NZS 2588.

WARRANTY

Provided that ClimateLine® is installed in complete accordance with the Intended Uses, Limitations and Installation method outlined in this publication, ClimateLine®, in accordance with the New Zealand Building Code and the Australian Building Code carries a warranty of ten years.

For the full warranty terms and conditions visit www.climatesurfaces.com



PRODUCT RANGE

ClimateLine® Standard is made from standard grade plasterboard for general use as wall and ceiling linings.

ClimateLine® Aqua is made from moisture resistant grade plasterboard for use in kitchens, laundries and bathroom environments or where a risk of isolated wetting exists.

Finish

All ClimateLine® plasterboard substrates are coated with Climate Décor Shield powder coating, which produces an attractive matt finish that is hard wearing, easy to clean and maintain; and VOC free.

Sizes and Colours

A wide range of sizes are available ex stock and on a made to order basis in Arctic Frost. ClimateLine® can also be supplied in custom made colours on a "made to order" basis. See Availability Chart at: www.climatesurfaces.com/ClimateLine

Accessories

Matching touch-up paint

Matching paint is available for minor repairs and touch-ups.

If the powder coated surface or board is damaged, dents or holes can be patched with plasterboard compound using standard techniques, sanded smooth and then re-painted with the Climateline matching touch-up paint. The gloss and texture of the touch up paint has been matched to the Climateline finish for optimal results.

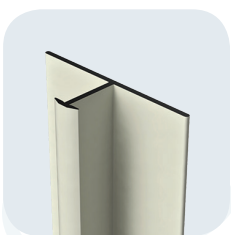
Refer to the ClimateLine® Repair Instructions document at: www.climatesurfaces.com/ClimateLine

Screw caps

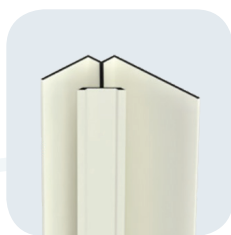
Colour matched self-adhesive screw caps are available to cover screw heads when boards are fixed to ceilings. The caps create a near invisible and convenient solution to cover screw heads.

Jointers/Trim

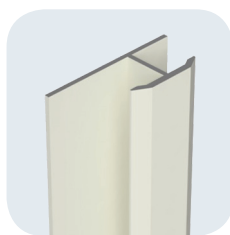
A full range of attractive colour matched or anodised aluminium trim designed to finish board joins, ends and internal and external corners. Quick to install and creates a contemporary finish. Size: 3000mm in 10mm and 13mm thickness.



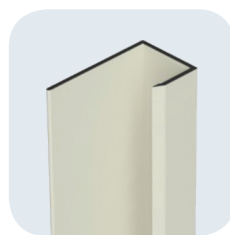
Slimline Jointer



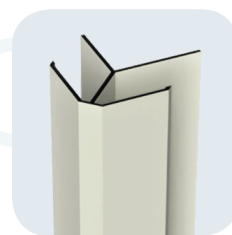
Internal Corner



H Jointer



Cap



External Corner

PHYSICAL PROPERTIES

Properties ClimateLine® Panels	Typical Value	Test Method
Reaction to Fire	Group 1S (New Zealand} Group 1 (Australia)	Cone Calorimeter ISO 5660
Density	10mm Standard 7.0 kg/m2 13mm Standard 8.7 kg/m2 10mm Aqua 7.8 kg/m2 13mm Aqua 10.7 kg/m2	
Hygiene	Pass	Surfaces to be smooth, non-porous and cleanable
Abrasion Resistance	1000 cycles	AS/NZS1580.403.2
Steam and Water Resistance	Coating unaffected after 24 hours exposure	
Resistance to household Cleaners	Pass	ASTM D3023
Resistance to Washing	Excellent. No change in gloss after repeated wash cycles	AS/NZS 1580.459.1
Hardness	H	Pencil Hardness
Sustainability	All standard grade plasterboard is Green Tag Certified to Green Rate Level A	Green Tag
	The Décor Shield powder coating is VOC free and non-hazardous	VOC Free

CARE AND MAINTENANCE

The powder coated surface of ClimateLine® is hard wearing and easily cleaned with warm soapy water and a soft cloth.

When stubborn stains or marks need to be removed use 'Diggers Wax & Grease Remover', available from Bunnings (pictured).

Do not use: Solvents such as white spirits, paint thinners, petrol, MEK, toluene or citrus based household cleaners that may mark or soften the coating.

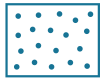


HANDLING



Cutting

Score and snap ClimateLine® panels using a builders knife as you would when cutting traditional plasterboard. Cut through the coated face first.



Holes and cutouts can be made using key hole saws and typical methods.

Sand the back face of the cut edge if necessary to ensure a clean fit into the trim.



Repair and Touch-up

Clean marks, dust, stains etc with warm soapy water and a soft cloth or for stubborn stains and marks use Diggers Wax & Grease remover available from Bunnings stores.



Minor scratches can be touched-up and holes or dents patched and repainted.

Refer to ClimateLine Repair Instructions at: www.climatesurfaces.com/ClimateLine



Storage

ClimateLine® panels must be stored in dry interior conditions on a minimum of four bearers across the full width of the sheet keeping the sheets flat at all times. Avoid leaning sheets against walls.



Store sheets where construction traffic and construction activity will not damage sheets.



Handle with Care

Treat sheets as a finished product and avoid dragging sheets across other surfaces which can mark the powder coating.



Use two people to lift and install the panels.



When lifting panels, first tilt the panel up on the side and then lift to prevent any damage from flexing, especially with longer sheets.



Wear gloves when installing to prevent marks from dirty hands and to reduce the cleaning required upon installation.

INSTALLATION

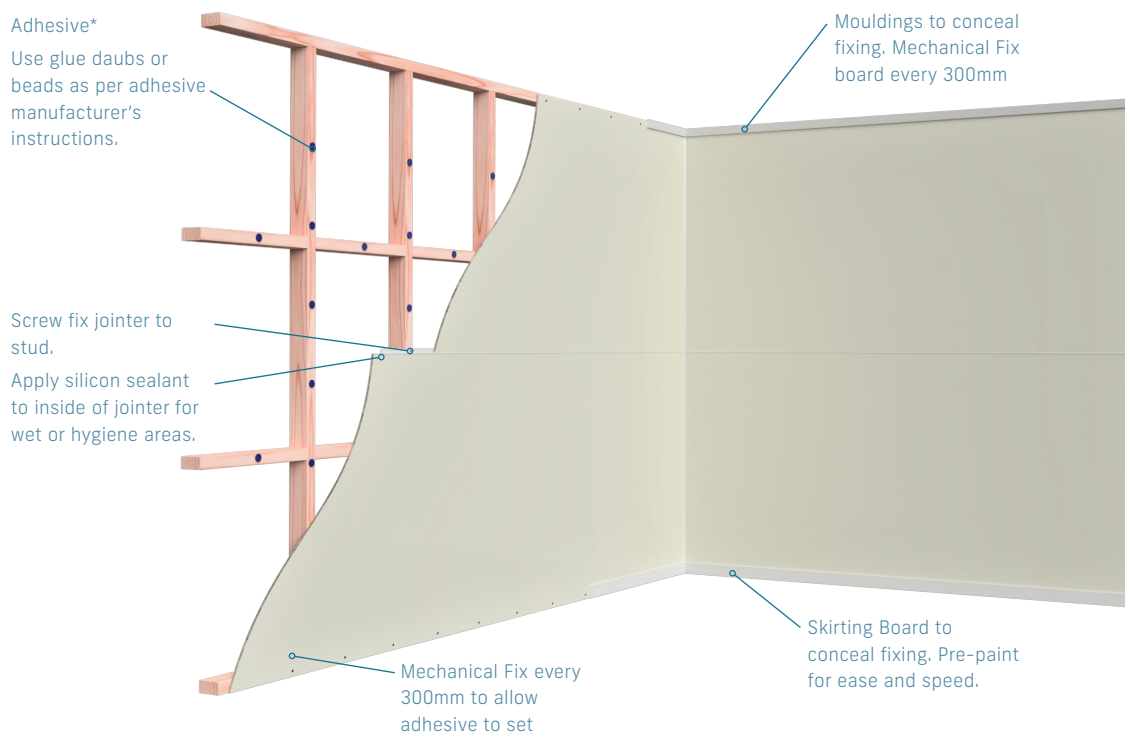
Installation Method for Horizontal Fixing

ClimateLine is fixed into place with water based wall board adhesives and the selective use of screws.

Use fast tack high quality water based adhesives for best results.

Screw fix along the top and bottom edges of where sheets intersect the wall and floor and where moulding's will conceal the screw heads. Fix the aluminium trim into place through the trim's base to provide additional support to board joins.

H Jointers are used to cover sheet joins. They are a one piece H mould with a wide base for fixing through. The tapered edges of the visible face of the jointer minimises shadowlines and creates a clean finish.



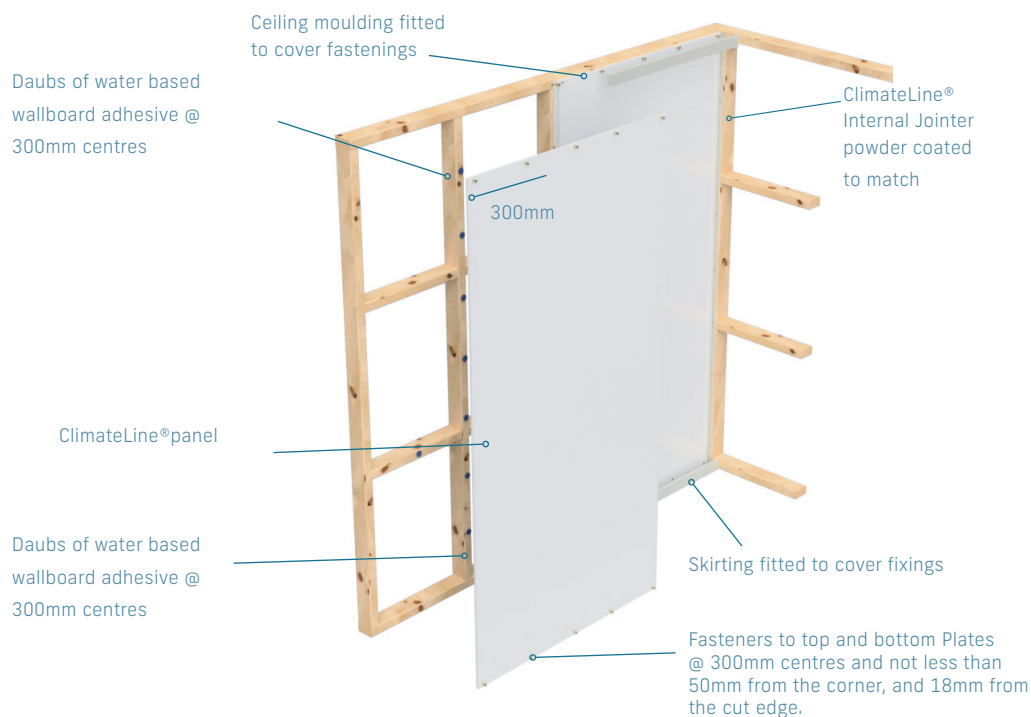
Installation Tips

- Use water based adhesives. Solvent based adhesives can bleed through to the coated surface.
- Start in the corner and work around the room,
- Place vertical joins above door/window trim to minimise joins.

INSTALLATION

Installation Method for Standard Timber and Steel Framed Walls in Dry Areas

- Climateline is fixed to the framing with water based wallboard adhesive and screw fixings along the top and bottom edge of the boards. Screw fixings are then covered by the skirting and scotia finishing trim.
- The End Cap is designed to finish off wall ends, openings or junctions with other materials. It can also be used to finish internal corners.
- Care is required to measure and cut the jointers to create neat junctions with the skirting and ceiling mouldings. If jointers are run to the ceiling and floor, the skirting and ceiling moulding will need to be rebated out to accommodate the jointer thickness.



Start in the corner of the room with the internal corner jointer and work your way around the room taking care to install the last board.

Once installed press the panel firmly onto the intermediate stud to allow wallboard adhesive to grab. Score and snap as for normal plasterboard, cutting the coated side, ensuring penetration of the coating to provide a clean snap.

Panel Fasteners:

Use 6g x 25mm Scavenger Head Drywall Screws for 10mm panels or 6g x 32mm for 13mm panels.

Jointer fasteners:

Use 6g x 25mm countersunk wood screws.

INSTALLATION

Installation Method for Standard Timber Framed Ceilings

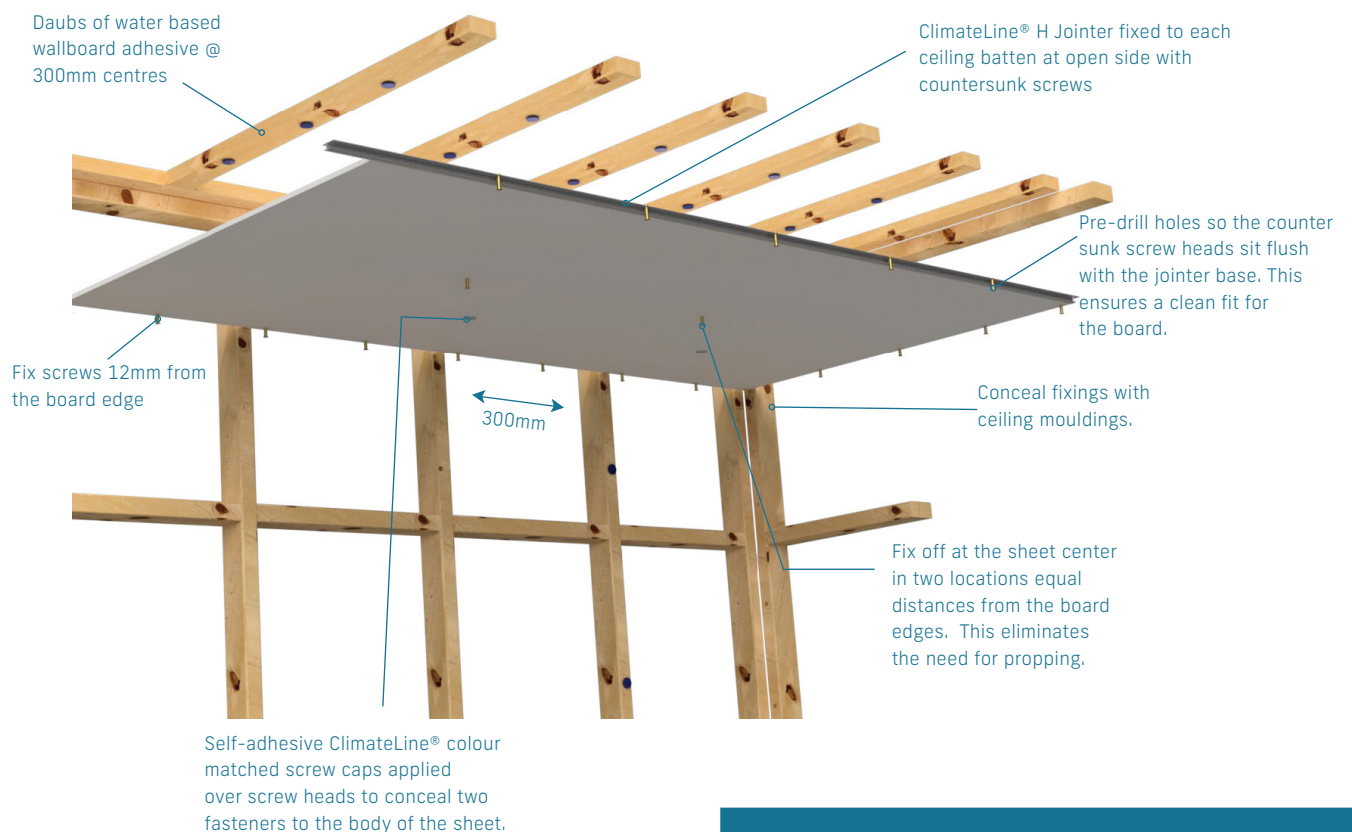
- If lining the ceiling and walls, start with the ceiling first.
- Ceiling sheets should be installed hard to the top plate. Wall boards are then butted up against the ceiling sheets.

Panel Fasteners:

Use 6g x 25mm Scavenger Head Drywall Screws for 10mm panels or 6g x 32mm for 13mm panels.

Jointer Fasteners:

Use 6g x 25mm countersunk wood screws.



TIP:

When installing cut edges into jointers, lightly sand the back edge of the cut edge for easier fitting.

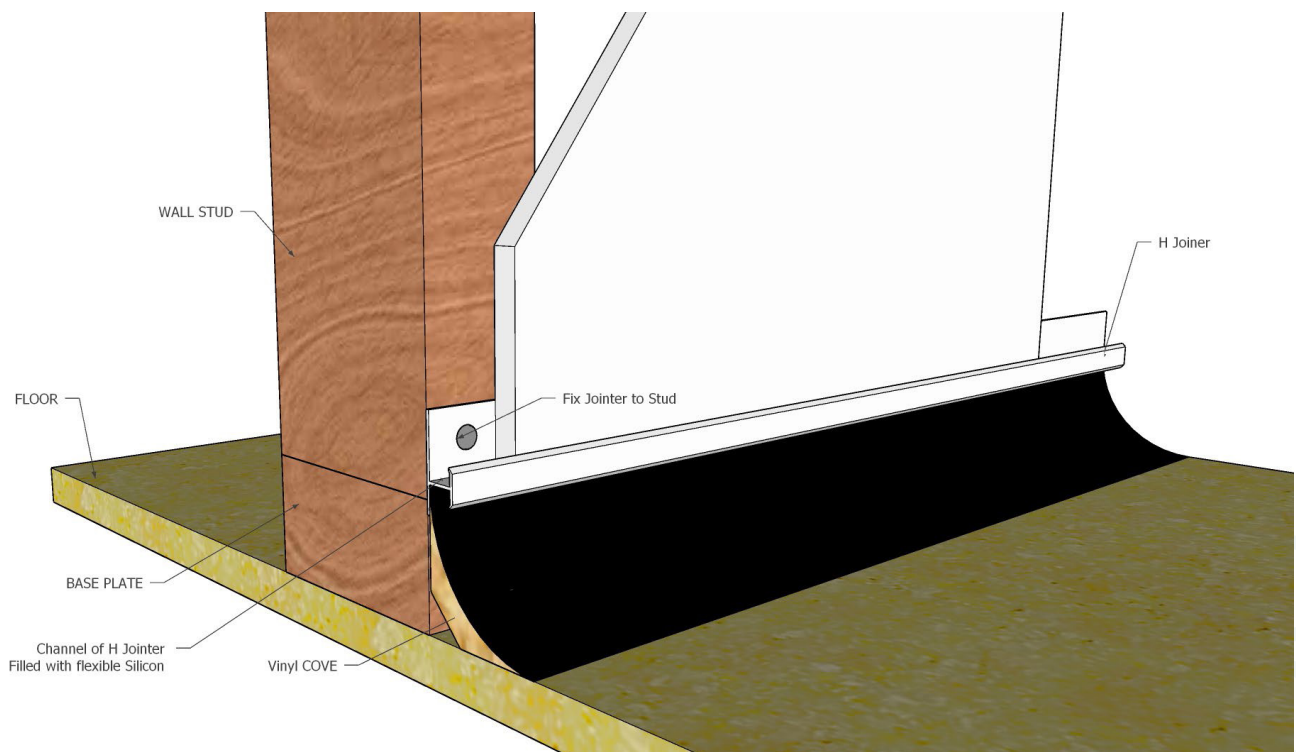
WET AREA INSTALLATION

As leaks and water ingress typically occur at junctions between building element and at penetrations, it is essential that particular attention is given to these details at the time of installation. Lack of attention to detail can result in water damage that could remain undetected for a long time.

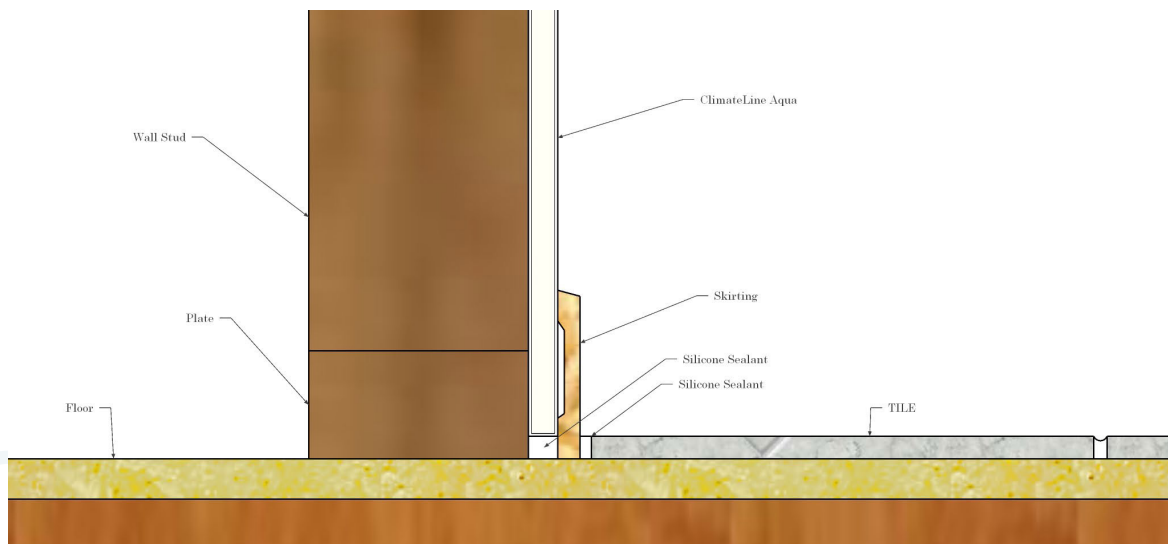
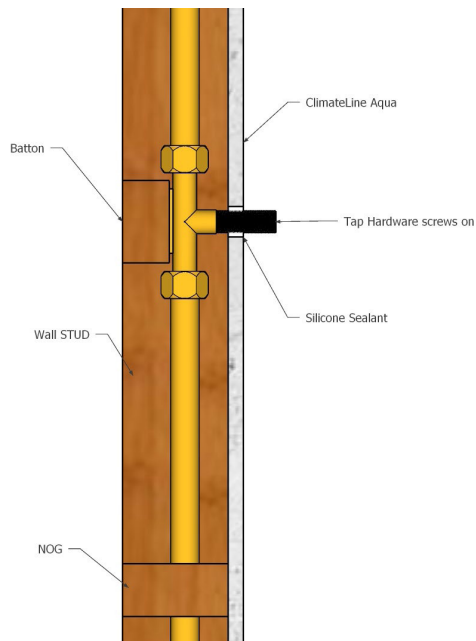
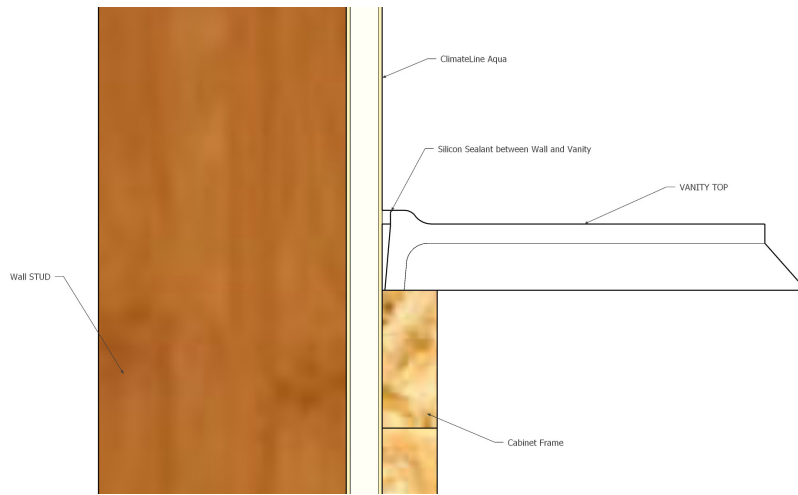
For wet areas pay special attention to the treatment of:

- **Sheet joins** must be sealed by applying a bead of waterproof silicon to the inside cavity of the aluminium jointer prior to inserting the board. This will create an impervious seal between the board and jointer to prevent water intrusion.
- **Junctions** such as wall to ceiling, wall to floor and wall to vanity/bath etc must be sealed with water proofing materials and techniques as per manufactures specifications and building code standards.
- **Penetrations** for pipes, plumbing, electrical etc must be sealed with approved water proofing materials and techniques as per manufactures specifications and building code standards.

Installation with Vinyl Cove



Apply a bead of silicone sealant to the full depth in the following locations



REPAIR

If damage does occur to the coating or plasterboard then repair is possible and a quality finish is relatively simple to achieve using the ClimateLine® repair method and specially formulated matching paint.

Full instructions to make a repair are available for download from:
www.climatesurfaces.com/ClimateLine

HEALTH AND SAFETY

When machining or cutting ClimateLine® sheets, including drilling, sawing and cutting, an appropriate dust mask should be worn along with non-fogging safety glasses and gloves.

To avoid cuts and splinters from sharp edges of aluminum moldings, suitable protective gloves should be worn. Use aluminum cutting tools only. Do not lift panels on your own and use appropriate handling and lifting techniques and equipment.

The Gib plasterboard used for ClimateLine® has been given Declare Red List free certification, meaning the products meet strict materials standards and are non-toxic.

TECHNICAL SUPPORT

Further information and technical support is available by contacting Climate Coatings Ltd.

Please ensure that you are using the latest publication by downloading the latest Technical Manual from
www.climatesurfaces.com/ClimateLine

climate[™]
THE CLEAN FINISH

MANUFACTURED BY
Climate Coating Ltd

New Zealand 0800 256 111
Australia +64 9 256 7879
Email info@climatesurfaces.com
www.climatesurfaces.com