

Security Series

Access Panels Data Sheet

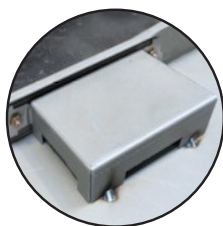
**Model: SupaMax
Maximum Security**
Maximum Security Access Panel



Pictured: SupaMax Maximum Security Panel

Product codes & sizes

Code	Size	Weight
SMX600	600 x 600mm	24kg
SMX450	450 x 450mm	22kg



Lock box



Hydraulic dampers

Other Como Access Panels products available include:

- Low security
- Medium security
- High security

Specifications subject to change without notice.

The Como Building Products **SupaMax Maximum Security Panels** are specifically designed for use in environments that require the **maximum level of security**. Designed and manufactured in Australia, the heavy duty components and detailed manufacturing methods ensure this product has the strength, durability required for maximum security. The SupaMax Maximum Security Panel is the only product of it's type tested to AS 4145-2.

Product description

Material

- Constructed from 32mm MDF door core
- Electro galvanised steel for inner and outer doors

Finish

- Fully welded steel jacketed door
- Pre primed white face to frame and door

Door

- Fully welded steel jacketed door
- 1.6mm electro galvanised steel outer door skin
- 0.6mm electro galvanised steel inner door skin
- 4.5mm reinforced leading door edge to prevent tampering

Frame

- 1.6mm electro galvanised folded steel to a profile of 88mm
- 40mm wide fully welded folded flanged frame for tamper prevention
- Prepunched for fixings and reed switches

Hinges

- Custom made 304 2B stainless steel hinge
- Recessed hinges into frame to prevent removal
- 6.35mm stainless steel pin welded to create 'fixed pin'
- 2.5mm stainless steel hinge leaf
- Hinges welded to frame and door in multiple locations
- Hinges open to 90°

Safety

- Hydraulic dampers for controlled door opening
- Anti ligature design
- Rounded corners to prevent 'sharps'

Lock

- Custom made 1.6mm lock box with Assa Abloy Lockwood 3571
- Option of the Lockwood 35791 SSEC endorsed with up to 4 hours fire rating
- Fully concealed in a fully jacketed steel cage and door
- Lock strike and lock bolt are fully concealed by the tamper proof leading edge of the door
- 3mm lock strike steel outer skin and 1.6mm inner skin plug welded together to frame
- 19mm stainless bolt
- Supplied with keyed alike construction cylinder for construction phase with changeover cylinder to restricted master keyed Assa Abloy Protect2 or similar (restricted cylinder supplied by others).

- Acoustic Timber Panels
- Passive Fire Retardant Products
- Plumbing Products
- Metal Pan Ceiling Tiles
- Access Panels



Distributed in New Zealand by



0800 45 4000 | www.forman.co.nz

Designed and manufactured by Como Building Products Pty Ltd in Australia