



# Quakworx Seismic Solutions

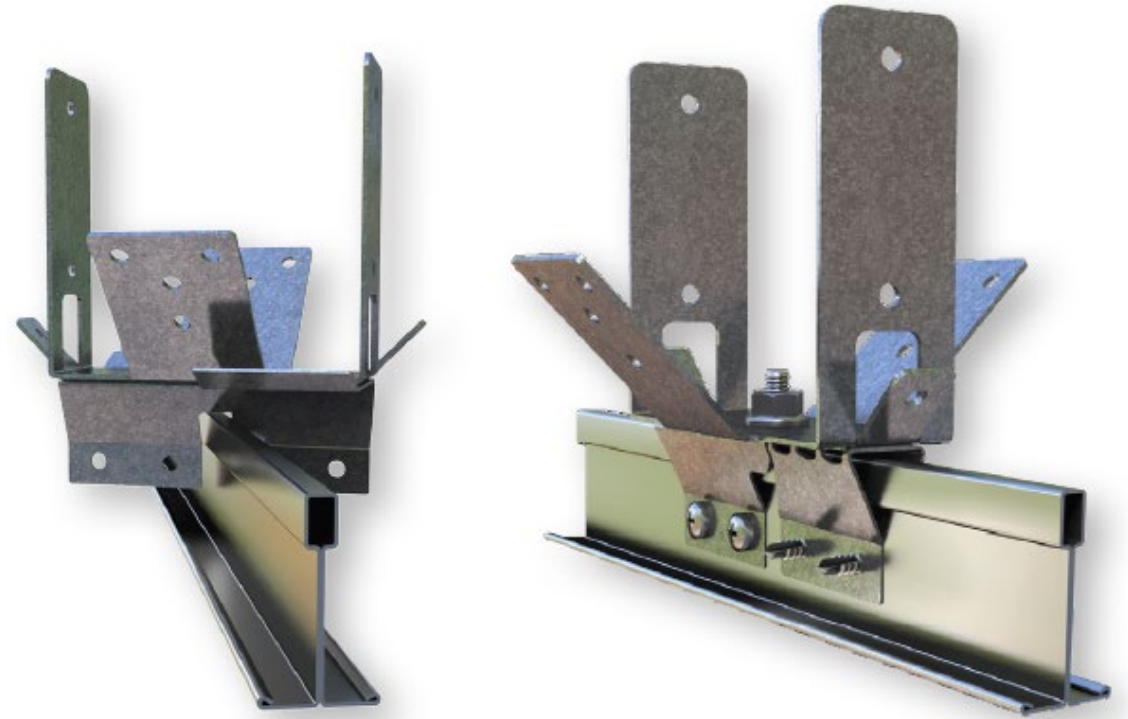
---

# Exposed Grid Ceilings

# Quakclip Tee



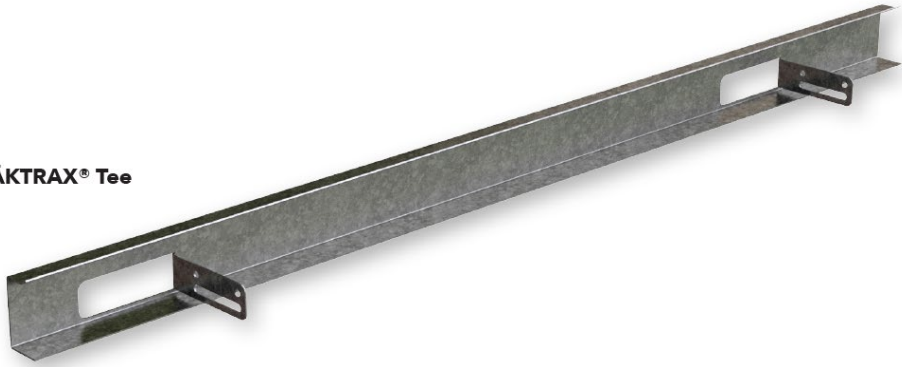
- Fits on to exposed ceiling grid.
- Available to suit 64mm or 92mm Stud.



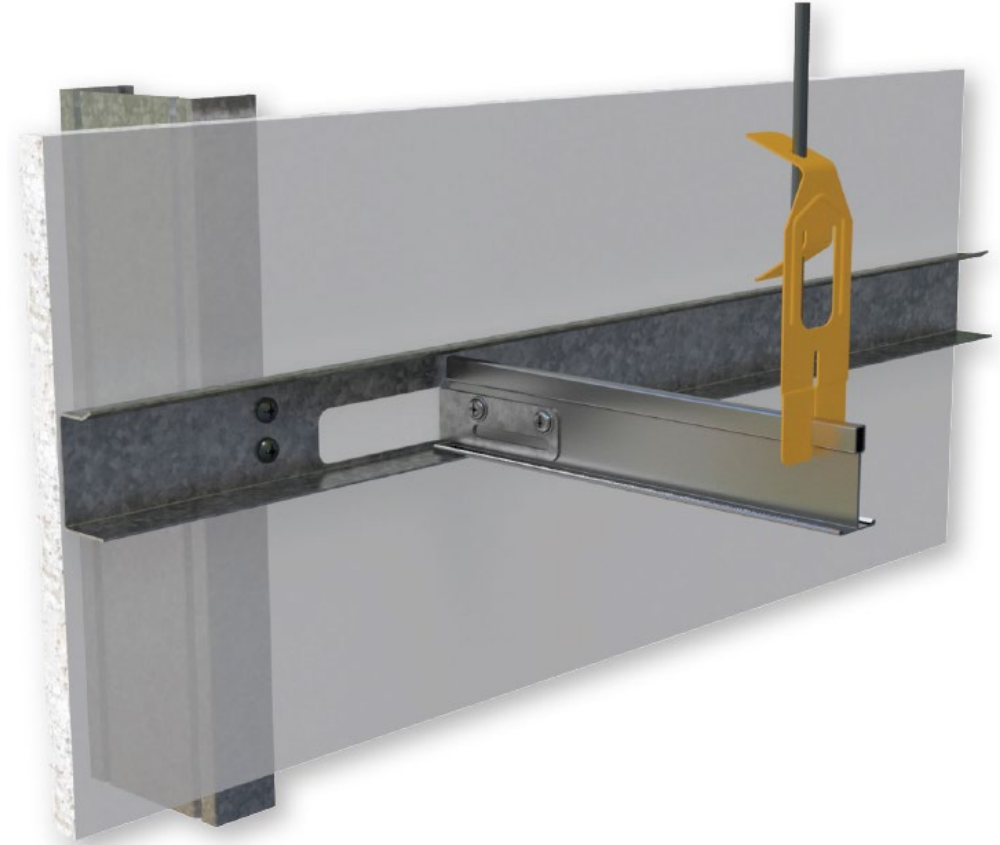
- Easy installation:
  - Rotate clip on to Main Tee
  - Fold down 'wings'
  - Screw fasten

# Quaktrax Tee

QUAKTRAX® Tee



- Tabs set out at 600mm centres
- Bottom leg powdercoated to match grid.
- Available to suit Square and Tegular Edge tiles in 3m lengths.



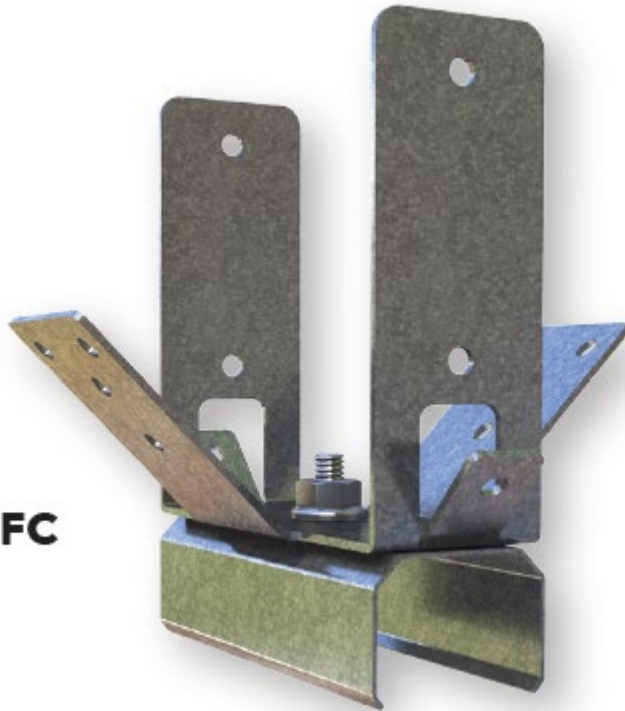
- Easy installation – no ceiling noggings required.

---

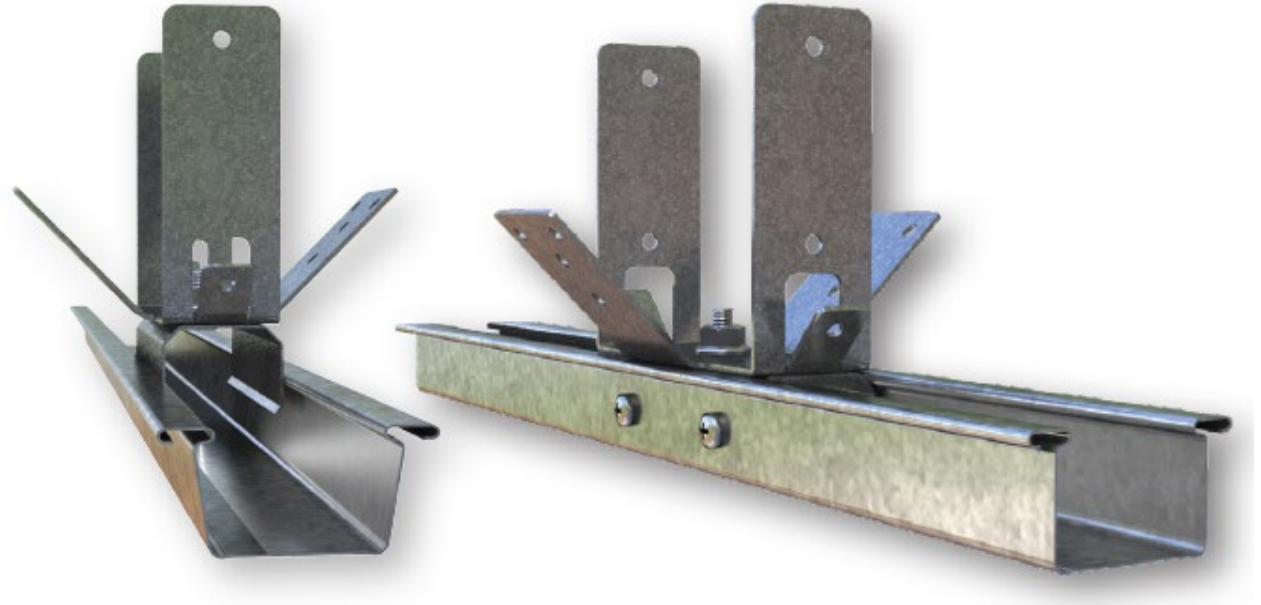
# Concealed Ceilings

# Quakclip FC

**QUAKCLIP® FC**



- Fits 28mm Furring Channels.
- Available to suit 64mm or 92mm Stud.



- Easy installation:
  - Push FC clip into Furring Channel
  - Screw fasten

# Quakclip TCR

**QUAKCLIP® TCR**

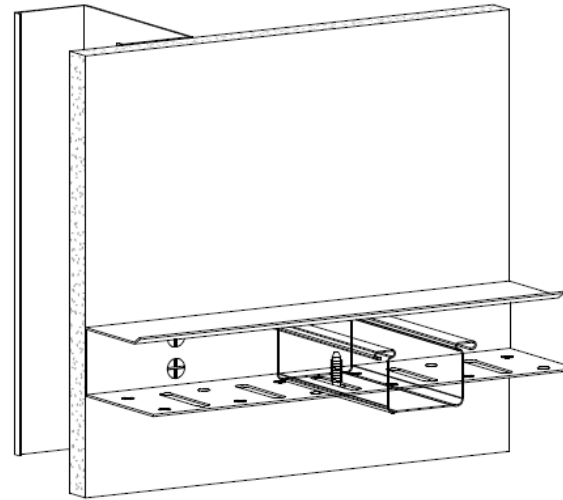


Easy installation:

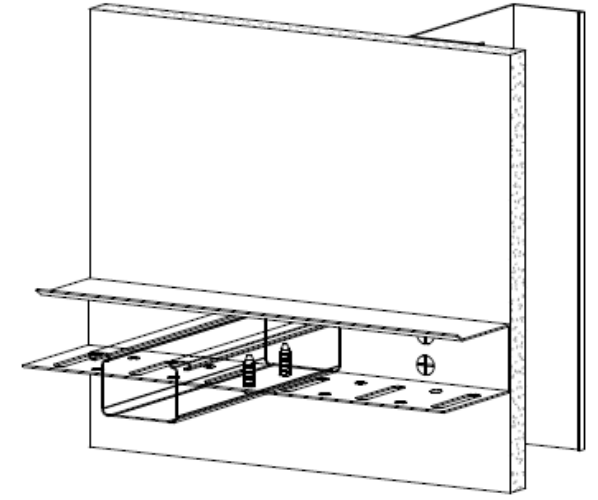
- Push TCR clip into Top Cross Rail
- Screw fasten

- For use with 25mm Top Cross Rails
- Available to suit 64mm or 92mm Stud.
- Also available for 38mm Top Cross Rails

# Quaktrax FC



FC Laterally-Restrained Floating Connection (3D View)



FC Fixed Connection (3D View)

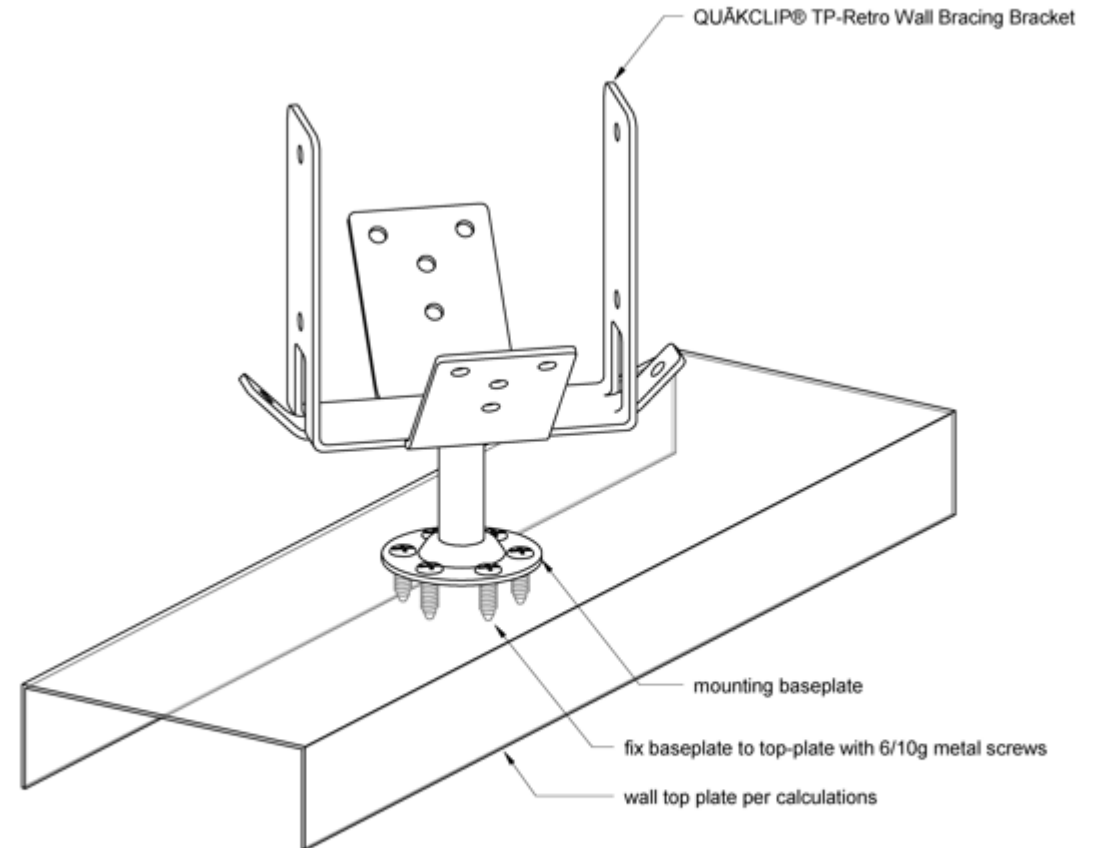
- Seismic perimeter track suitable for use on both fixed and floating edge.
  - Suits 28mm Furring Channels in 3m lengths.
- For the fixed edge, screw into the furring channel through the holes.
  - For the floating edge, screw into the furring channel through the slots.



---

# Partitions

# Quakclip TP-Retro

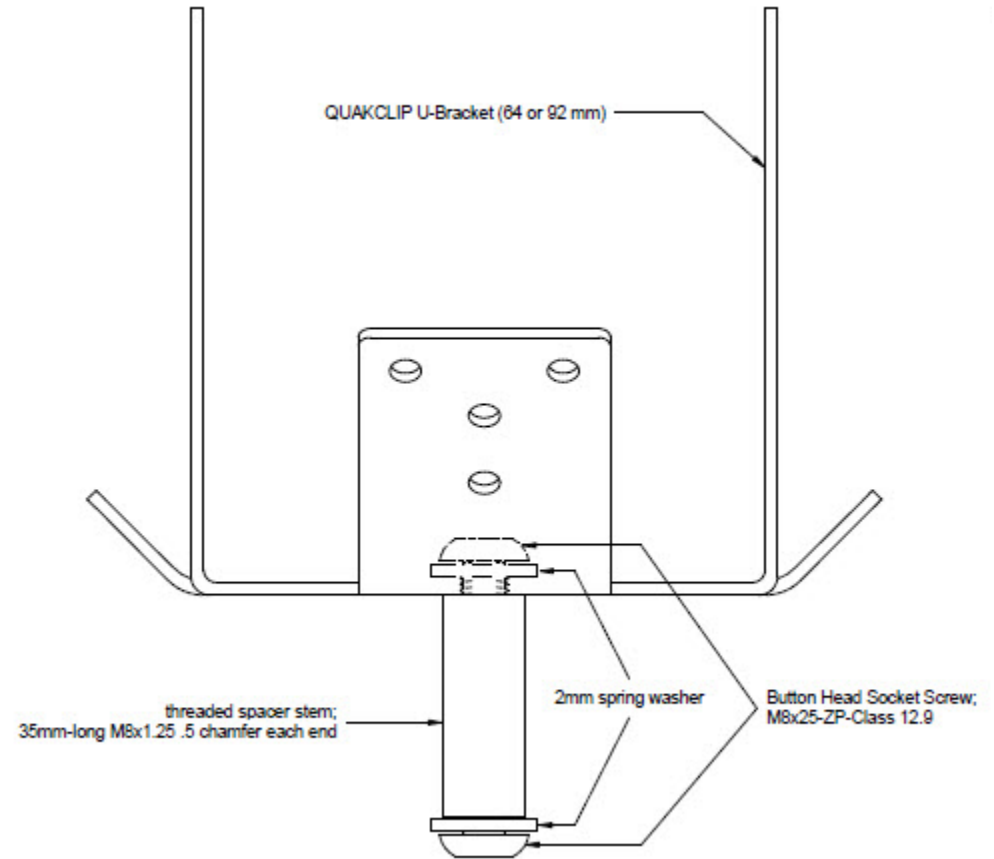


**QUAKCLIP® TP-Retro - Connection to Wall Top-Plate for Retrofit Installations**

Other components not shown for clarity.

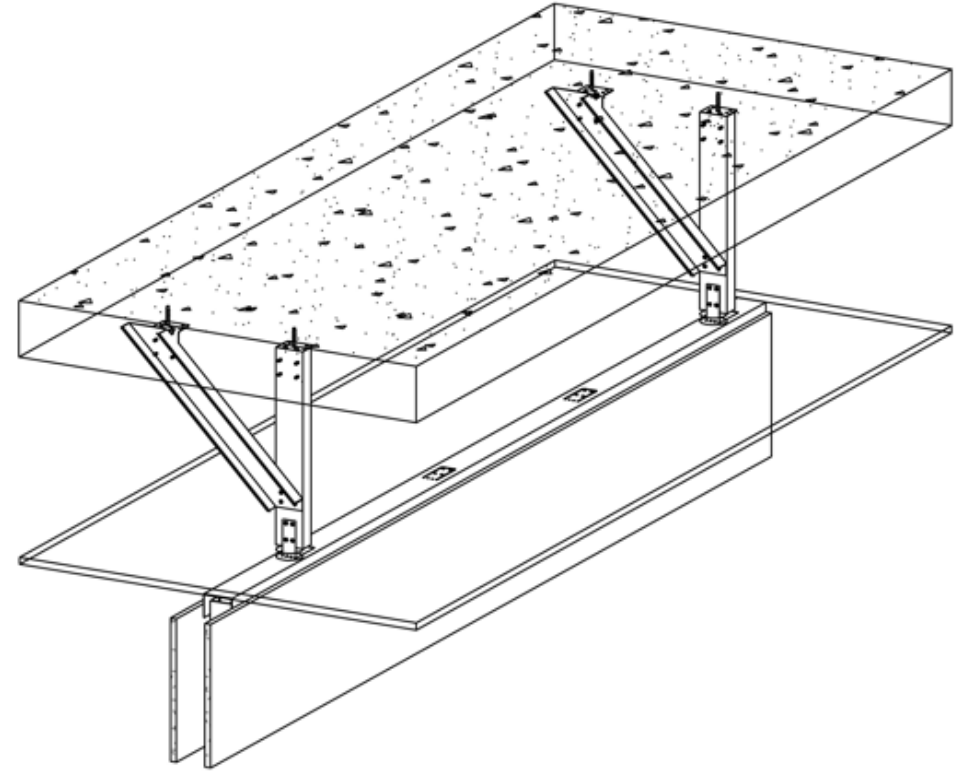
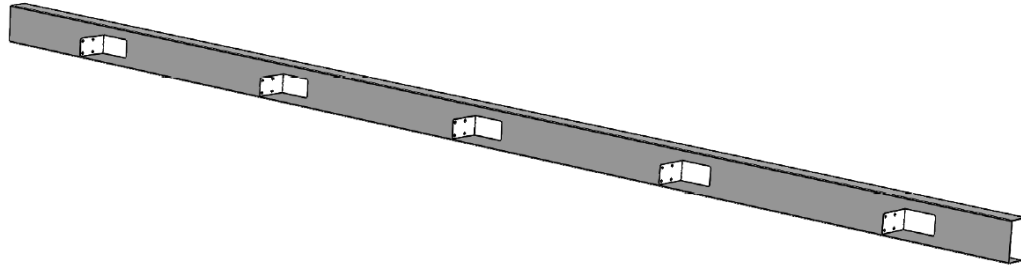
- Available to suit 64mm or 92mm stud.
- Easily installed via screws into partition top plate/head track.

# Quakclip TP



- Available to suit 64mm or 92mm stud.
- Easily installed via a hole through the steel head track.

# Seismic Deflection Head Track



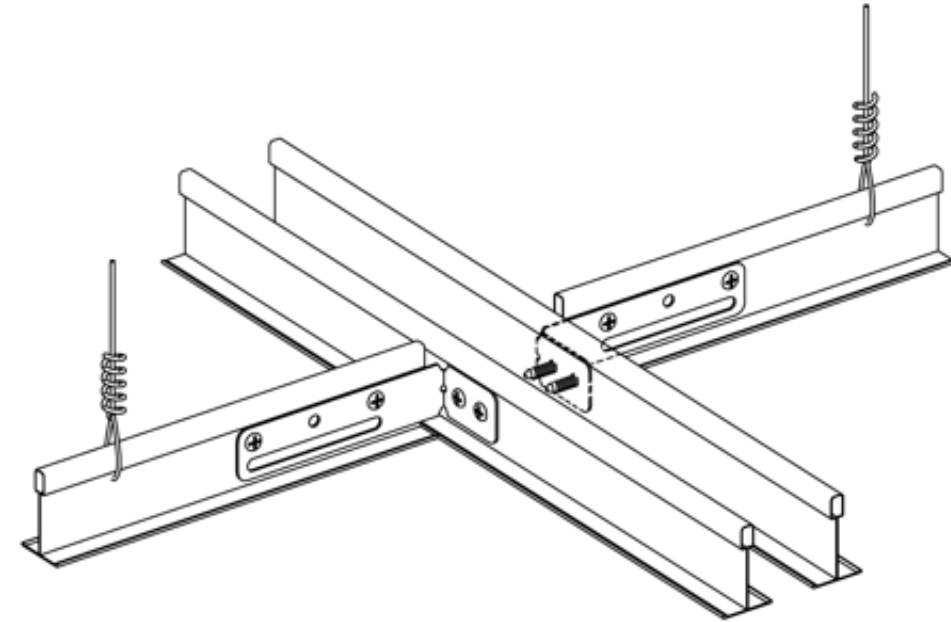
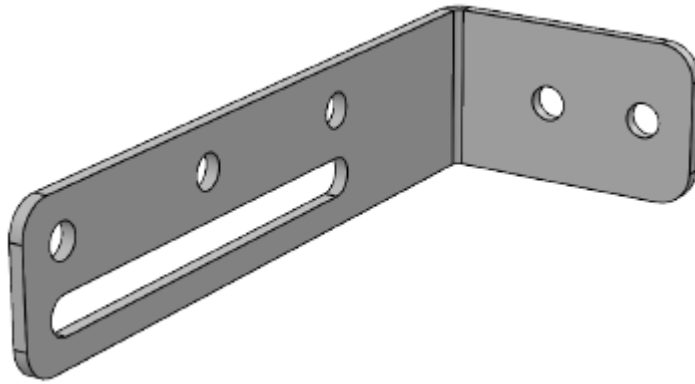
QUAKTRAX® BHT Partial Height Wall Bracing (Overview)

- Available in both 64mm and 92mm widths in 3m lengths.
- Bracing is easily attached by connecting to the precut fold out tabs.

---

# Other Solutions

# Off Module Clip



SJ-MT Seismic Break - Main Tee Terminal End (3D View)

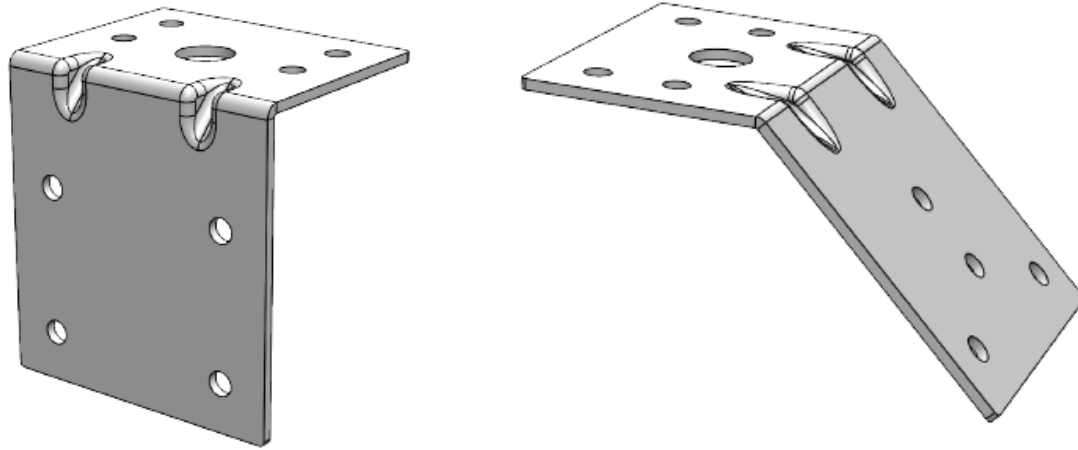
## Uses:

As a Main Tee or Cross Tee connector for larger seismic breaks.

For perimeter restraint where set out does not allow the use of Quaktrax Tee. (Ceiling nogging required)

Available in both in left, and right hand, orientation.

# 45° and 90° Soffit Brackets



- Used as the connector to the building structure.

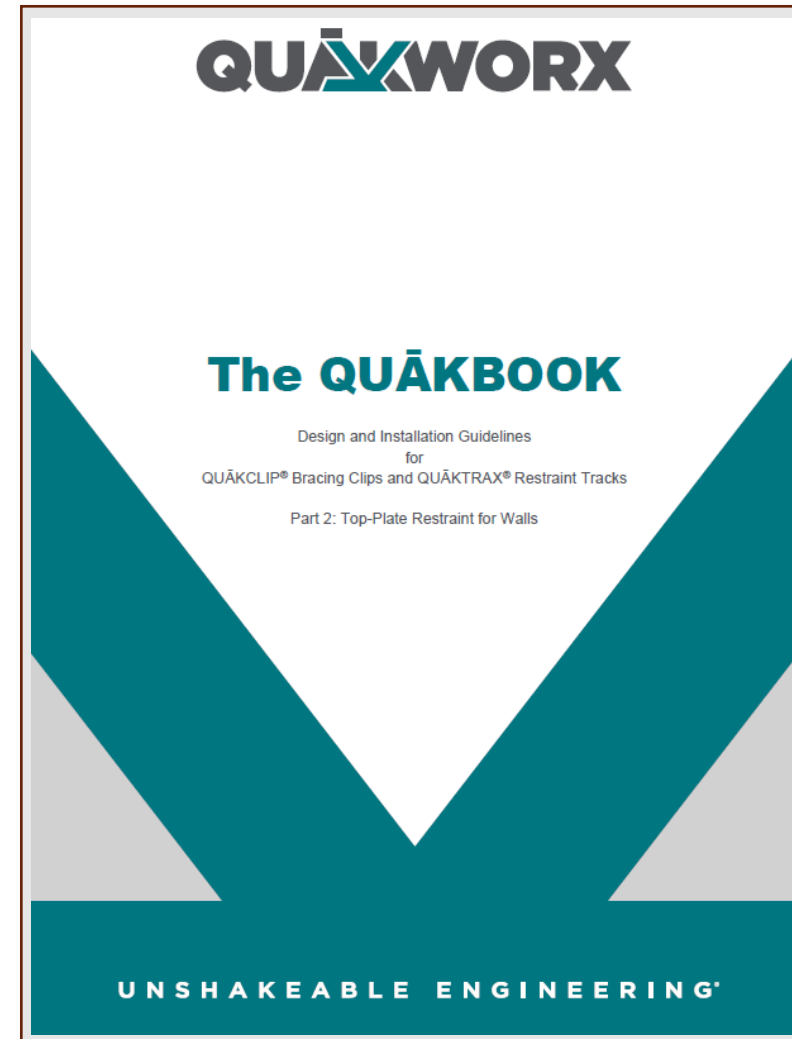
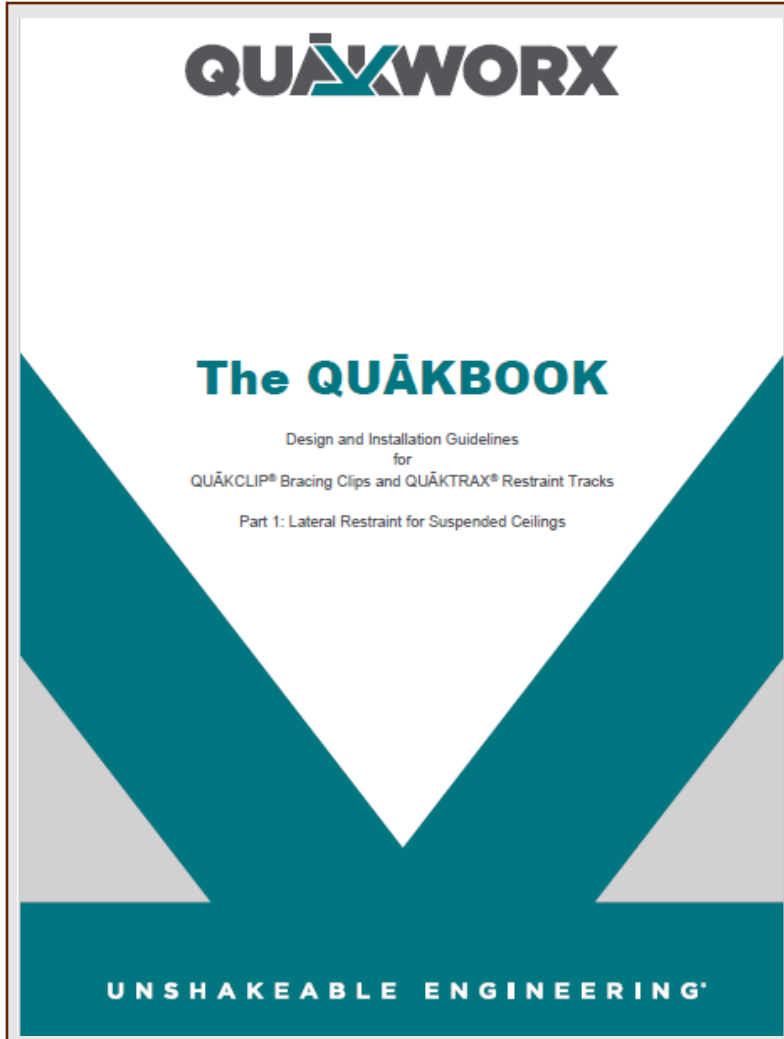


---


# Technical Information



# Design & Install Guidebooks



# Testing and Warranty



## STRUCTURES TEST REPORT

### ST14489-01-2


#### QUAKWORX CONNECTION TESTING

**CLIENT**  
Comfortech Building Performance Solutions  
9-15 Holloway Place  
Penrose  
Auckland 1061

All tests and procedures reported herein, unless indicated, have been performed in accordance with the BRANZ ISO9001 Certification

REPORT NUMBER:	ISSUE DATE:	PAGE:
ST14489-01-2	9 August 2024	1 of 126

branz.nz | 1222 Moonshine Rd, RD1, Porirua 5381, Private Bag 50 908, Porirua 5240, New Zealand | Phone +64 4237 1170 | branz@branz.co.nz



November 2024

#### Comfortech Quakworx products warranty

Comfortech warranty for the below mentioned Quakworx products manufactured and installed in New Zealand only.

- Quakclip Tee
- Quakclip FC/TCR
- Quaktrax Tee
- Quaktrax FC
- Quakclip TP/TP Retro
- Seismic Deflection Head Track
- 45 and 90 deg Soffit Brackets
- Off Module Clips

Comfortech warranties these products against defects in materials for a period of 10 years from the date of purchase.

If a claim is to be accepted Comfortech will work with you to find the most appropriate resolution to the warranty issue.

#### Terms and Conditions.

Products must be installed as per the current Quakworx installation guidelines.

No modifications are to be made to the Quakworx products, or how they are installed.

Products are not to be installed outside, or in corrosive environments.

To register this warranty please fill out the below information and return to your nearest Comfortech branch.

Project Name:

Project Address:

Engineer:

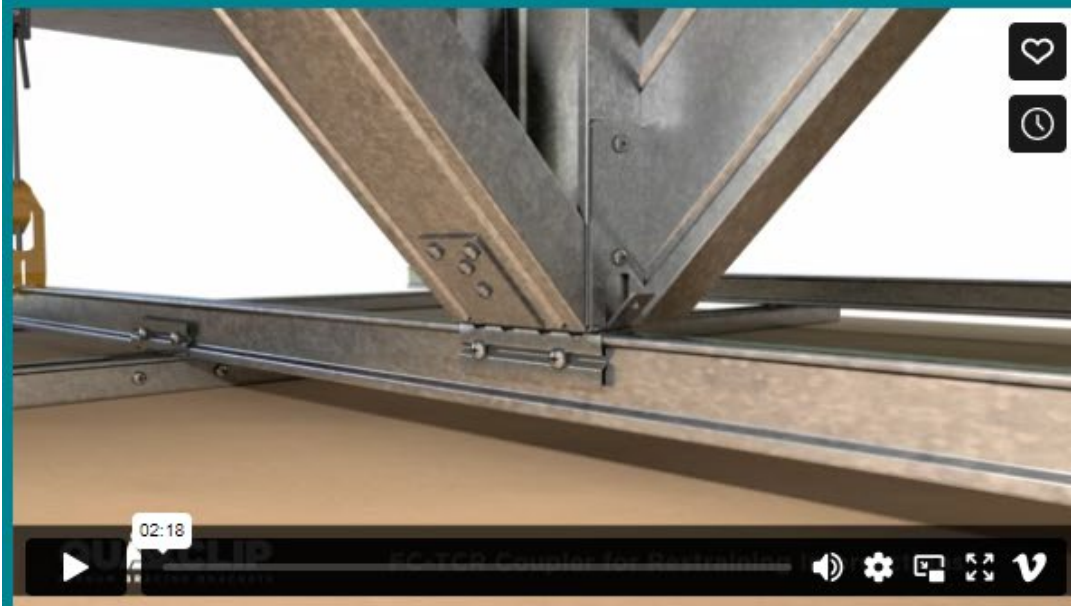
Installer:

Products used:

Comfortech Invoice numbers:

Comfortech Building Performance Solutions®  
9-15 Holloway Place, Penrose Auckland 1061  
Auckland | Wellington | Christchurch  
www.comfortech.co.nz

# Videos



QUAKCLIP®

Plenum Bracing Clips for Suspended Ceilings



QUAKTRAX®

Perimeter Restraint Tracks for Suspended Ceilings

[QUAKWORX Seismic Restraint for Walls & Ceilings \(quakworx.com\)](http://quakworx.com)

[QUAKCLIP SEISMIC BRACING SOLUTIONS.mp4 on Vimeo](#)

[QUAKTRAX SEISMIC PERIMETER TRACKS FOR CEILING RESTRAINT \(Final 210312\).mp4 on Vimeo](#)

# Thank you.



[technicalsupport@comfortech.co.nz](mailto:technicalsupport@comfortech.co.nz)



0800 45 4000



[www.comfortech.co.nz](http://www.comfortech.co.nz)