

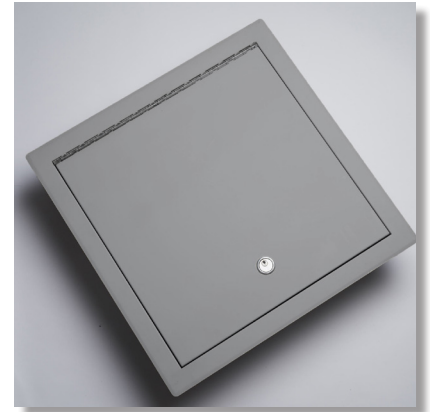
- Acoustic Timber Panels
- Passive Fire Retardant Products
- Plumbing Products
- Metal Pan Ceiling Tiles
- Access Panels

Security Series Access Panels

Data Sheet

Model: **HSA (High Risk Area Access Panel)**

The Como Building Products High Security Access Panels are specifically designed for use in environments that require the highest level of security. Designed and manufactured in Australia, the heavy duty components and detailed manufacturing methods ensure this product has the strength and durability for the toughest projects.



Product profile

Manufacturing origin: Como Building Products – designed and made In Australia

Project use: ceilings and walls

Available sizes (mm)

- HSA600: 600 x 600mm
- HSA450: 450 x 450mm
- HSA SPECIAL: custom sizes on request

Material

- Constructed from electro galvanised steel and MR MDF, with SS hinge, hydraulic dampers and locking hardware

Finish

- Primed finish ready to accept paint

Door panel

- Constructed from 1.6mm steel outer skin & 0.6mm inner skin
- 32mm E1 MR MDF core (FSC™ on request)
- Steel door skins tack welded together

Frame

- Fabricated from 1.6mm electro galvanised steel to a profile of 85mm
- Flanged frame with anti-ligature corners
- Welded boxed lock strike to conceal lock tongue
- Frame junctions to be fully welded

Hinges

- A semi-recessed 6.35mm pin x 2.5 thick, full length stainless steel piano hinge
- Welded to frame and door
- Pin welded to prevent removal

Lock

- Door to be supplied fitted with a Lockwood 213 dead lock or equivalent
- Keyed alike with a construction cylinder, with escutcheon to outer face
- Steel lock cover to be fitted with anti-tamper screws to prevent tampering

Seals

- Provide perimeter door seals with rubber D-moulded seal

Safety

- Gas strut/s for controlled door descent

Options

- Reed switch provision – factory pre-drilled mounting hole locations to frame for wiring loom and fixing screws
- HSAR model available with increased depth frame of 170mm

Access panel weight (EA)

HSA600: 600 x 600mm: 18kg
HSA450: 450 x 450mm: 16kg

