

M190 CONNECTOR

Studco M190 Bypass Framing Connector

PRODUCT DESCRIPTION

Designed to accommodate vertical deflection in buildings between steel stud walls and the structure, the Studco M190 range of bypass framing connectors offers a fast and versatile solution.

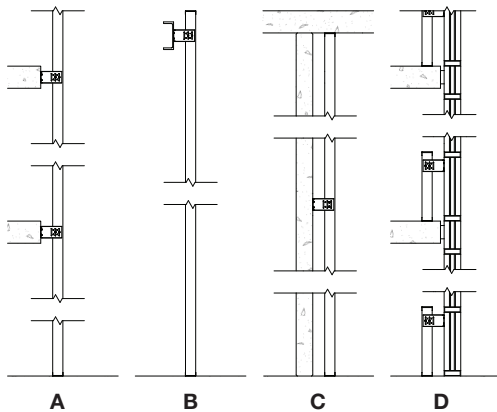
Designed and tested for a variety of uses including bracing high walls, fixing freestanding walls, and fixing bypass framing (stud curtain walls). These connectors can be fixed to concrete and steel structures using masonry anchors, structural screws, powder-actuate pins or welded joints.

Studco's M190 connectors are a safer and stronger alternative to common site-built bracing options using stud and track offcuts, which are not guaranteed to be fit for purpose and have been known to suffer critical failure.

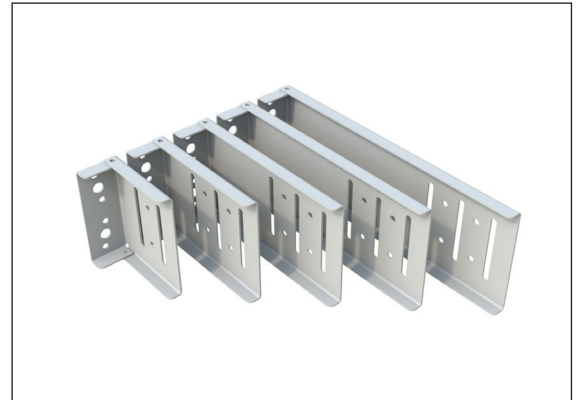
FEATURES

- Allows 30mm of upward and downward movement (60mm slotted holes)
- Range of sizes to accommodate stand-offs from 100-300mm.
- Versatile connector that can be used in many applications.
- Engineered for fixing to concrete or structural steel .
- Suitable for internal and external use with 92mm and 150mm studs, and can be used in seismic applications.
- Increased structural capacity by screwing connector flanges.
- Holes provided for use in non-deflection applications.

APPLICATION



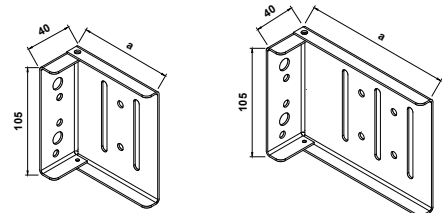
- A** Bypass framing for steel stud external curtain wall
- B** Horizontal head connection
- C** Lateral bracing for high walls or heavy linings
- A** Nib walls or free-standing walls



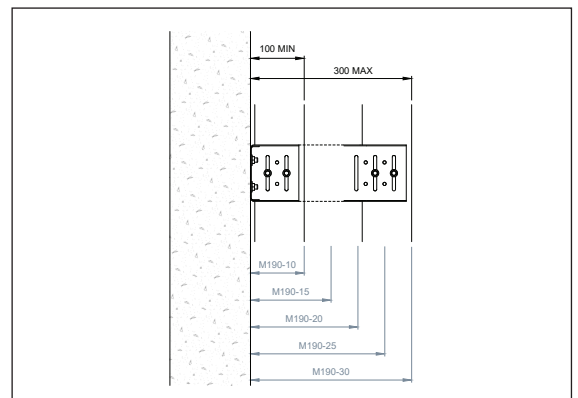
M190



Product	Dimension 'a'	No. Of Slots
M19016-10	90	2
M19016-15	140	3
M19016-20	190	3
M19020-25	240	3
M19020-30	290	3



M190 DIMENSIONS



M190 WALL CAVITY DIMENSIONS

For Sales Enquiries, please contact Studco Building Systems on (03) 9737 2500

Product Database

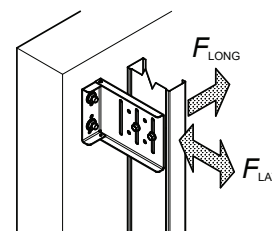
M190 CONNECTOR

Studco M190 Bypass Framing Connector

Leaders in Innovative
 Building Products

PERFORMANCE / TECHNICAL

Product	Gauge	F_{LONG}		F_{LAT}		Structure	Fixings	Stud	Screws
		As Supplied	With Flange Screws Fitted	As Supplied	With Flange Screws Fitted				
M19016-10	1.6mm	70 kgf	98kgf	155 kgf	230 kgf	Steel ¹	2# 10g Screws ²	1.15mm stud	2#-10g ²
						Concrete ³	2# 8mm Anchors ⁴		
M19016-15	1.6mm	65 kgf	88 kgf	155 kgf	230 kgf	Steel ¹	2# 10g Screws ²	1.15mm stud	2#-10g ²
						Concrete ³	2# 8mm Anchors ⁴		
M19016-20	1.6mm	32 kgf	42 kgf	155 kgf	230 kgf	Steel ¹	2# 10g Screws ²	1.15mm stud	2#-10g ²
						Concrete ³	2# 8mm Anchors ⁴		
M19020-25	2.0mm	20 kgf	24 kgf	290 kgf	350 kgf	Steel ¹	2# 10g Screws ²	1.15mm stud	2#-10g ²
						Concrete ³	2# 8mm Anchors ⁴		
M19020-20	2.0mm	16 kgf	19 kgf	290 kgf	350 kgf	Steel ¹	2# 10g Screws ²	1.15mm stud	2#-10g ²
						Concrete ³	2# 8mm Anchors ⁴		



M109 Allowable Loads

- 1 Minimum 3.0mm thick structural steel yield strength 300MPa
- 2 Use only hex head with washer face screws. Use Series 500 screws if fixing to structural steel.
- 3 Structural concrete min. 32MPa
- 4 Minimum concrete anchor embedment 50mm

PRODUCT RANGE

Part No.	Description	Length	Sub-Pack	Stock Pack	Approx kg/pce
M190-10	Bypass Framing Connector 100mm cavity	90	10	10	0.22
M190-15	Bypass Framing Connector 150mm cavity	140	10	10	0.30
M190-20	Bypass Framing Connector 200mm cavity	190	10	10	0.38
M190-25	Bypass Framing Connector 250mm cavity	240	10	10	0.47
M190-30	Bypass Framing Connector 300mm cavity	290	10	10	0.55

SPECIFICATION

For connection between structure and steel stud wall framing, use Studco M190 bypass framing connector to achieve correct wall cavity (available in 100mm, 150mm, 200mm, 250mm and 300mm). For engineered wall framing solutions for external walls and high walls, contact Studco Building

RELATED PRODUCTS



ACCREDITATION



For Sales Enquiries, please contact Studco Building Systems on (03) 9737 2500